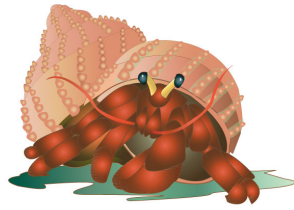


Recommended Reader Assignment

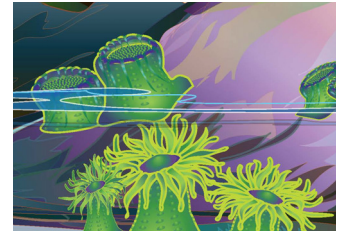
FOR TEACHER'S USE ONLY - NOT FOR STUDENT USE



The Glub Club

presented in....

Playbook™ Advantage⁺ Format



Reader No.	Story Character	Group 1 Reader	Group 2 Reader	Group 3 Reader	Group 4 Reader	Group 5 Reader
1	<p>Uncle Pat <i>Speaks 20 Times</i> <i>11% of Story</i> Stage 1 - Early Reader</p>					
2	<p>Joy <i>Speaks 25 Times</i> <i>9% of Story</i> Stage 1 - Early Reader</p>					
3	<p>Mom <i>Speaks 28 Times</i> <i>22% of Story</i> Stage 2 - Beginning Reader</p>					
4	<p>James <i>Speaks 34 Times</i> <i>12% of Story</i> Stage 2- Beginning Reader</p>					
5	<p>Narrator <i>Speaks 19 Times</i> <i>45% of Story</i> Stage 3 - Transitional Reader</p>					

To download and print additional copies of this page, visit www.playbooks.com/rra.htm

© 2007, Playbooks, Inc., Ladera Ranch, CA