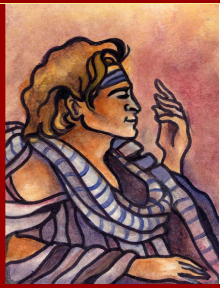


Recommended Reader Assignment

FOR TEACHER'S USE ONLY - NOT FOR STUDENT USE

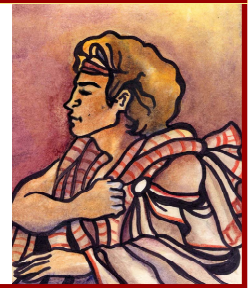


A Comedy of Errors

Originally by William Shakespeare

Adapted to....

Playbook® Format



Reader No.	Story Character	Group 1 Reader	Group 2 Reader	Group 3 Reader	Group 4 Reader	Group 5 Reader
1	Antipholus of Syracuse <i>Speaks 47 Times</i> <i>11% of Story</i>					
2	Antipholus of Ephesus <i>Speaks 58 Times</i> <i>13% of Story</i>					
3	Dromio of Syracuse <i>Speaks 49 Times</i> <i>9% of Story</i>					
4	Dromio of Ephesus <i>Speaks 44 Times</i> <i>9% of Story</i>					
5	Adriana <i>Speaks 78 Times</i> <i>13% of Story</i>					
6	Luciana <i>Speaks 37 Times</i> <i>6% of Story</i>					
7	Small Parts Women <i>Speaks 34 Times</i> <i>9% of Story</i>					
8	Small Parts Men <i>Speaks 50 Times</i> <i>12% of Story</i>					
9	Narrator <i>Speaks 45 Times</i> <i>18% of Story</i>					

To download and print additional copies of this page, visit www.playbooks.com/rra.htm

© 2007, Playbooks, Inc., Ladera Ranch, CA